

PRESS

Series: **SATURNIA**

Sizes: 20"x20" 1"x1" Square Mosaic (mesh-mounted)
13"x13" 2"x2" Square Mosaic (mesh-mounted)
1"x2" Diamond Mosaic (mesh-mounted)
2"x3½" Diamond Mosaic (mesh-mounted)

Description: Understated elegance with a sense of strength underlies Marazzi USA's **SATURNIA**. Named after an ancient Italian city renowned for its refreshing natural thermal springs, Saturnia's glazed porcelain surface features intricate niches and indentations that appear randomly formed by the earth's internal forces yet remain simple to clean.

Four soft, warm, gentle colors (ivory, walnut, gray, gold), can carry an installation on their own or coexist with multiple mesh-mounted mosaic options that add richness and depth to floors, walls, backsplashes and pools.

The Class 4 durability rating expands Saturnia's application possibilities from personal to professional spaces. Both the 13"x13" and the 20"x20" sizes feature a thick body structure that imparts boldness and massiveness.

Elegantly balancing the series is Serena Listelli in a 4"x13" Border and 4"x4" Corner. Subdued floral motifs are screened to resemble ancient mosaic pieces that can be used on floors or walls, individually or in tandem.

Product Data: Type: Floor & Wall – Glazed Porcelain
Colors: Acqua, Argilla, Creta, Elios
Rating: Class 4 – Moderate / Heavy Traffic: Tile suggested for residential, medium commercial and light institutional floor and wall applications.

Suggested Retail Price: 20"x20" – \$3.99 per square foot
13"x13" – \$3.59 per square foot

Consumer Contact: Call Customer Service at (972) 226-0110 or go to www.marazzitile.com to locate nearest distributor

Press Contact: Judith A. Mevius
Marketing Communications Manager
American Marazzi Tile
359 Clay Road
Sunnyvale, TX 75182-9710
Phone: (972-226-0110, ext. 2209
Email: jmevius@marazzitile.com
FAX: (972) 226-2263
WEB: www.marazzitile.com

For Immediate Release March 22, 2006

American Marazzi Tile, Inc. 359 Clay Road Sunnyvale, TX 75182 USA	Telephone 972-226-0110 Fax 972-226-2263	Website www.marazzitile.com E-mail contact@marazzitile.com
--	--	---

IMAGE GUIDE

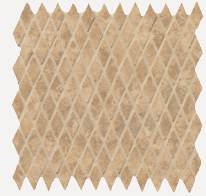
SATURNIA by Marazzi USA



Saturnia_Entry.jpg



2"x2" Square
Shown in Acqua



1"x2" Diamond
Shown in Argilla



1"x1" Square
Shown in Creta



2"x3½" Diamond
Shown in Elios



Acqua.jpg



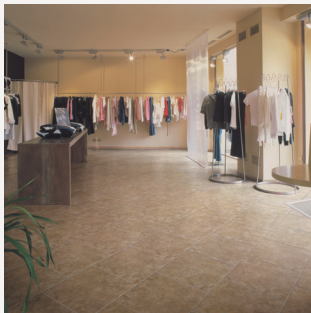
Argilla.jpg



Creta.jpg



Elios.jpg



Saturnia_Retail.jpg

For Immediate Release March 22, 2006

American Marazzi Tile, Inc.
359 Clay Road
Sunnyvale, TX 75182
USA

Telephone
972-226-0110
Fax
972-226-2263

Website
www.marazzitile.com
E-mail
contact@marazzitile.com