

PRESS

Series: **VESALE STONE**

Sizes: 20" x 20" 1" x 1" Square Mosaic (mesh-mounted)
13" x 13" 2" x 2" Square Mosaic (mesh-mounted)
10" x 20" 2" x 3½" Diamond Mosaic (mesh-mounted)
6½" x 6½"

Description: **VESALE STONE** by Marazzi USA captures the look of refined slates found in the ancient hills of Italy and transports that simpler, organic building material to glazed porcelain for modern dwellings and public areas. Asynchronous glaze applications create dramatic pattern diversity.

Rich tonal ranges and dramatic streaks suggest the characteristic layers and clefing of natural slate while the surface remains flat and easy to clean. A final granular frit application enhances slip resistance and textural appeal.

Modern, fresh, clear earthtones in beige, brown, grey and green with straight edges banish conventionality. Modularity in 6½"x6½" and 10"x20", mesh-mounted mosaics in three (3) incremental sizes (1"x1" Square, 2"x2" Square, and 2"x3½" Diamond) and SBN cut from field tile expand the functionality and design capabilities of the series.

Product Data: Type: Floor & Wall - Glazed Porcelain
Colors: Sand, Rust, Smoke, Moss
Rating: Class 4 – Moderate / Heavy Traffic: Tile suggested for residential, medium commercial and light institutional floor and wall applications.

Suggested Retail Price: 20" x 20" – \$4.30 per square foot
13" x 13" – \$3.99 per square foot

Consumer Contact: Call Customer Service at (972) 226-0110 or go to www.marazzitile.com to locate nearest distributor

Press Contact: Judith A. Mevius
Marketing Communications Manager
American Marazzi Tile
359 Clay Road
Sunnyvale, TX 75182-9710
Phone: (972)-226-0110, ext. 2209
Email: jmevius@marazzitile.com
FAX: (972) 226-2263
WEB: www.marazzitile.com

For Immediate Release June 20, 2006

American Marazzi Tile, Inc.	Telephone	Website
359 Clay Road	972-226-0110	www.marazzitile.com
Sunnyvale, TX 75182	Fax	E-mail
USA	972-226-2263	contact@marazzitile.com

IMAGE GUIDE

VESALE STONE by Marazzi USA



Rust_Hotel Lobby.jpg



Moss_1 Square.jpg



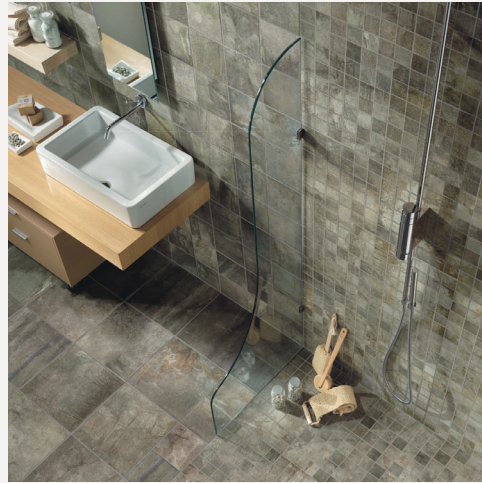
Rust_2 Square.jpg



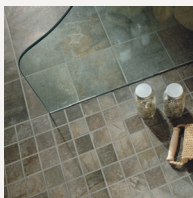
Sand_Diamond.jpg



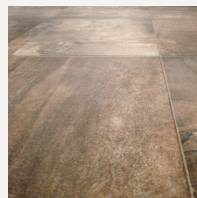
Smoke with rectangular.jpg



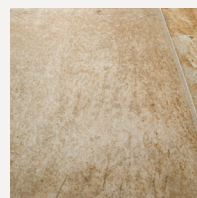
Moss_Bath.jpg



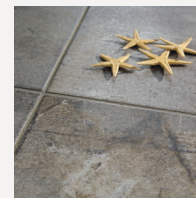
Moss.jpg



Rust.jpg



Sand.jpg



Smoke.jpg

For Immediate Release June 20, 2006

American Marazzi Tile, Inc.
359 Clay Road
Sunnyvale, TX 75182
USA

Telephone
972-226-0110
Fax
972-226-2263

Website
www.marazzitile.com
E-mail
contact@marazzitile.com